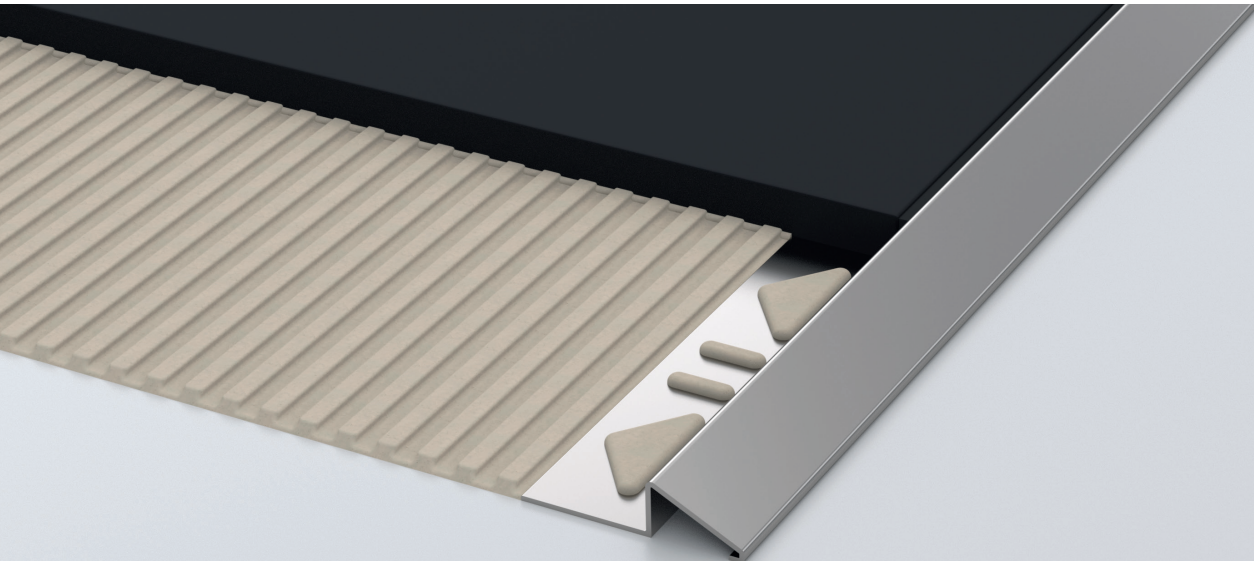


alferlevel

RAMP PROFILE MADE OF STAINLESS STEEL

alferpro®



Application ramp profile

The ramp profiles create a stepless transition and are suitable for connecting to lower materials.

THE NICEST THING IN LIFE IS FREEDOM. ELIMINATE INTERFERING BARRIERS!

Even the smallest differences in height often lead everyday to significant limitations. Especially in public areas or commercial areas this accessibility is disruptive and should be avoided. But this is often not possible for old buildings and conversions.

With the profiles of the alferlevel series, you can compensate for differences in levels of up to 20mm – even outdoors. Whether pallet truck, wheelchair or inline skates, the profiles are robust and can make annoying obstacles just disappear. DIN 18040 Part 1 and Part 2 Barrier-free building.

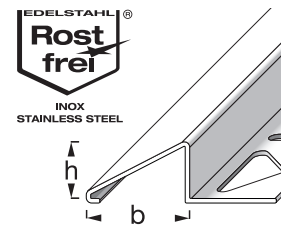
TECHNICAL SPECIFICATIONS

Stainless steel V2A 1.4301 / X5CrNi18-10

All measures, weights and loads as indicated in this data sheet are approximate figures. We can not assume liability for any special applications as well as damage resulting from improper assembly or use, a corresponding suitability test must always be carried out by the customer.

GLOSSY

STAINLESS STEEL
V2A



INSTALLATION

Choose the ramp profile size according to the thickness of the tile. Apply with a suitable notched trowel the tile adhesive to area to be tiled. Cover the perforated flange of the trim with tile adhesive, press the tile firmly into the adhesive bed and align it correctly.

DELIVERY FORM

The profiles are available in the following heights (wide):
8 (15); 10 (20); 11 (22); 12,5 (25) mm

The profiles are available in the following lengths:
250 cm

SURFACES

Glossy

PACKING UNIT

PU 1 = 10 pcs, PU 2 = 50 pcs, PU 3 = 150 pcs

PROCESSING, CARE, CLEANING

The following points must be observed in order to prevent damage on the profiles surfaces:

- Our and the processing instructions of the tile adhesive must always be observed.
- Any excess of grout, mortar and tile adhesive on the profile surface should be removed immediately with water.
- Allow to dry out thoroughly, ensuring the area is well ventilated.
- The protective film or similar, used for the installation, can only be removed after the mortar has completely set.
- The profiles are cleaned with a damp cloth and pH-neutral cleaning agents. Stubborn dirt on the profiles can also be removed with solvents.

MATERIAL PROPERTIES

Stainless steel ramp profiles are suitable on both indoor and outdoor areas and can bear medium to high mechanical solicitations. The material has a high tolerance and endurance to chemicals. Stainless steel ensures excellent resistance to corrosion, so it is ideal in the food, chemical, hospital and high transit areas.

STORAGE AND TRANSPORT

The profiles must be protected against external and environmental threats.

DISPOSAL

The profiles can be delivered to authorized steel recycling centers.

SPECIAL NOTE

Warranty and disclaimer

The application examples and tips shown in this data sheet and on our website are guidelines based on conventional crafting techniques. All information, including product-related information is standard. The author excludes any warranty for the information given in the data sheet and on the website. For the usability of products for specific purposes and for the occurrence of damage or the occurrence of defects by the information or tips given here, no warranty is also accepted. Errors, misprints and technical changes - as far as they serve the progress - reserved. Photos and illustrations are not binding. No liability for printing and image defects. Imitation and reprinting, even in part, is not permitted.

As of: 10/2023