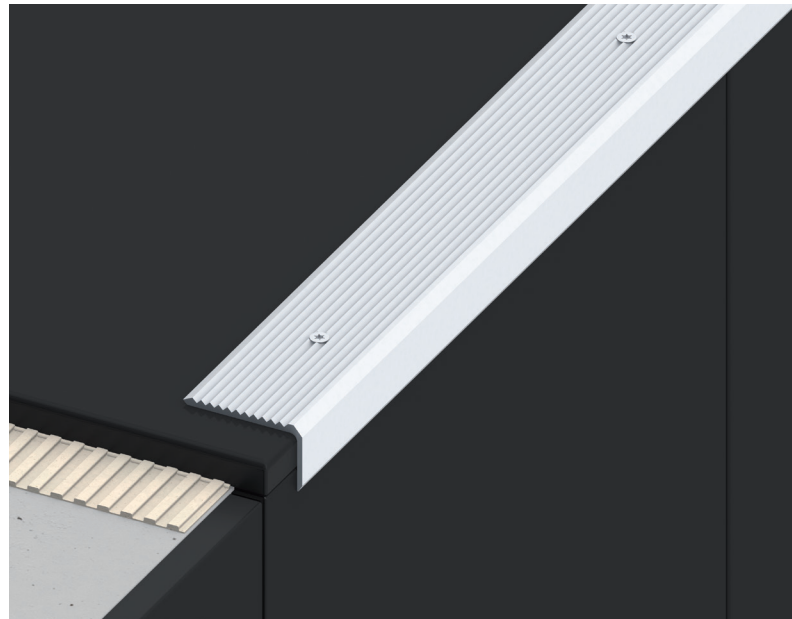
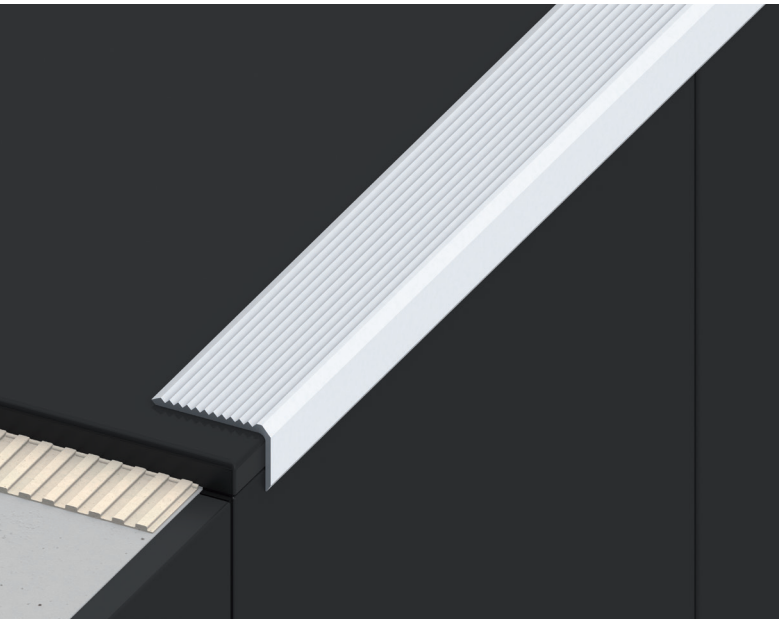


alferstep

STAIR ANGLE PROFILES
MADE OF ALUMINIUM

alferpro®



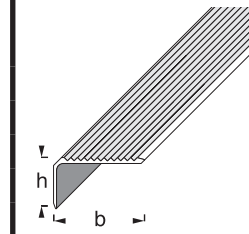
FORM MEETS FUNCTION: STYLE ELEMENT AND SAFETY FACTOR AT ONCE.

Stairs are a defining design element in architecture. The steps provide creative transitions and structure to the space. alferstep combines visual requirements with functional needs. Step edge profiles increase tread safety and protect the edge at the same time against mechanical stresses.

STAIR ANGLE PROFILE, UNPERFORATED

ANODISED

ALUMINIUM



TECHNICAL SPECIFICATIONS

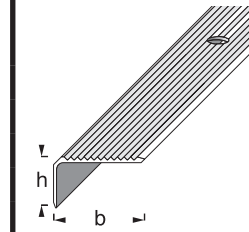
AlMgSi0,5
Material number: 33.206

All information is approximate. Since we can not assume liability for special applications, a corresponding suitability test must always be carried out by the customer.

STAIR ANGLE PROFILE, PERFORATED

ANODISED

ALUMINIUM



PROCESSING

Cut to length the unperforated step edge profile. Remove the protective foil from the adhesive strip and then firmly press it on the step.

Cut to length the perforated step edge profile. Mark the position of the pre-drilled fixing holes of the profile. Introduce the fixing screws through the holes and secure the profile onto the step.

DELIVERY FORM

The profiles are available in the following heights:
23 mm

The profiles are available in the following widths:
41 mm

The profiles are available in the following lengths:
150; 250 cm

SURFACES

Anodised

PACKING UNIT

PU 1 = 10 pcs, PU 2 = 50 pcs, PU 3 = 150 pcs

PROCESSING, CARE, CLEANING

The profiles are cleaned with a damp cloth and pH-neutral agents. Please do not use alkaline detergents.

MATERIAL PROPERTIES

Aluminium stair angle profiles are suitable for low to medium mechanical loads in indoor and outdoor areas and have a high resistance to chemicals.

STORAGE AND TRANSPORT

The profiles should be protected against external impact and abrasion.

DISPOSAL

The profiles can be supplied to aluminium recycling.

SPECIAL NOTE

Warranty and disclaimer

The application examples and tips shown in this data sheet and on our website are guidelines based on conventional crafting techniques. All information, including product-related information is standard. The author excludes any warranty for the information given in the data sheet and on the website. For the usability of products for specific purposes and for the occurrence of damage or the occurrence of defects by the information or tips given here, no warranty is also accepted. Errors, misprints and technical changes - as far as they serve the progress - reserved. Photos and illustrations are not binding. No liability for printing and image defects. Imitation and reprinting, even in part, is not permitted.

As of: 05/2020