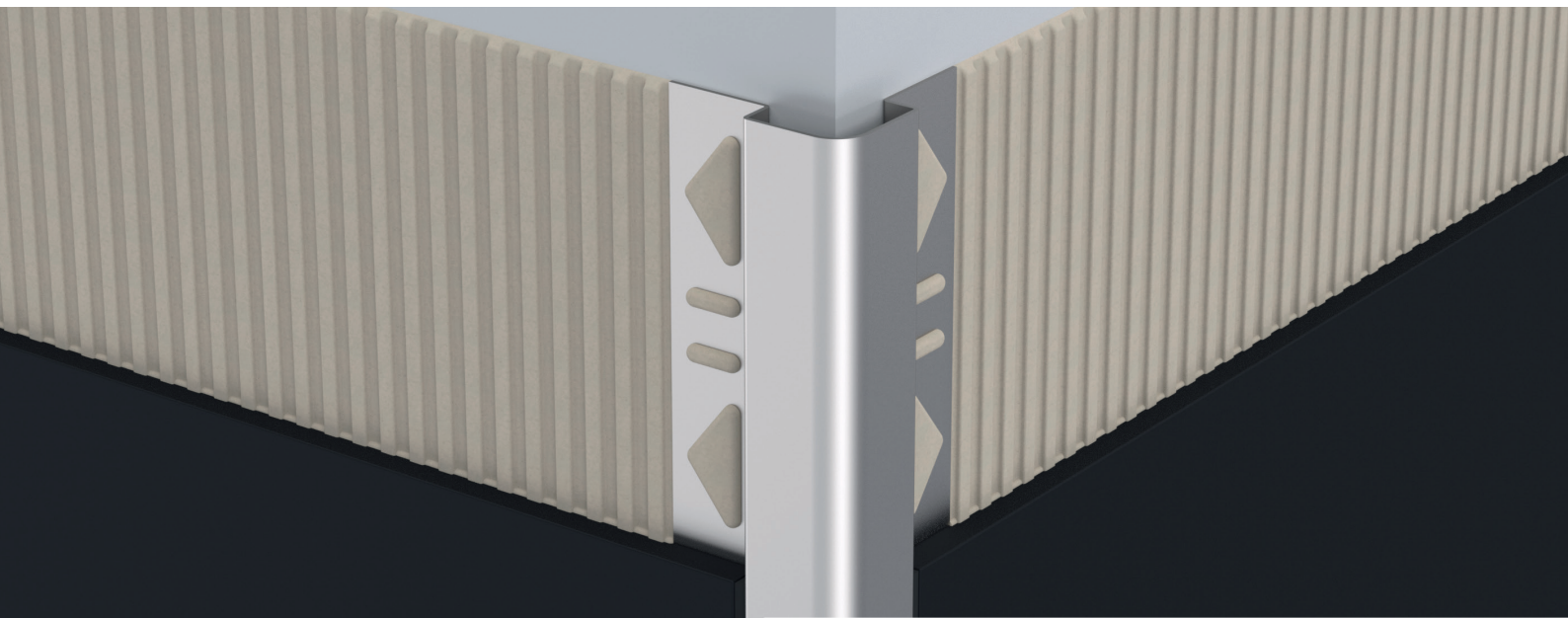


alfercorner

EDGE PROTECTING PROFILE
MADE OF STAINLESS STEEL V2A

alferpro®



Application edge protecting profile

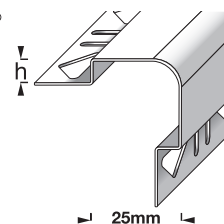
alfercorner – The profile offers perfect protection for heavily stressed tile edges, ideal in public and commercial spaces. Installation is done when laying tiles directly in bed.

STABLE AND CLEAN EDGES FOR TILE COVERINGS, PLASTERED OR WALLPAPERED WALLS.

No more broken edges. The profiles of the alfercorner series protect wall edges permanently from impact damage. Ideal in highly frequented areas such as hallways and public spaces. Thanks to timeless design and many options you will find the correct product for every application: profiles for installing in the tile bed or for subsequent completion, edged single and triple-fold in many options of stainless steel or aluminium.

GLOSSY
BRUSHED
(240K)

STAINLESS STEEL
V2A



TECHNICAL SPECIFICATIONS

Stainless steel V2A 1.4301 / X5CrNi18-10

All measures, weights and loads as indicated in this data sheet are approximate figures. We can not assume liability for any special applications as well as damage resulting from improper assembly or use, a corresponding suitability test must always be carried out by the customer.

INSTALLATION

Choose the edge protecting profile size according to the thickness of the tile. Apply with a suitable notched trowel the tile adhesive to area to be tiled. Cover the perforated flange of the trim with tile adhesive, press the tile firmly into the adhesive bed and align it correctly.

DELIVERY FORM

The profiles are available in heights:
8; 10mm
depending on the surface (see catalog).

The profiles are available in lengths:
200; 300cm
depending on the surface (see catalog).

SURFACES

Glossy, brushed (240K)

PACKING UNIT

PU 1 = 10 pcs, PU 2 = 50 pcs, PU 3 = 150 pcs

PROCESSING, CARE, CLEANING

The following points must be observed in order to prevent damage on the profiles surfaces:

- The processing instructions of us and the tile adhesive must always be observed.
- Any excess of grout, mortar and tile adhesive on the profile surface should be removed immediately with water.
- Allow to dry out thoroughly, ensuring the area is well ventilated.
- Cover the covering with a protective foil or similar only after the mortar has completely set.
- The profiles are cleaned with a damp cloth and pH-neutral agents.
- To cut the profiles to length, we recommend a low-speed angle grinder with a special cutting disc for stainless steel.

MATERIAL PROPERTIES

Stainless steel edge protecting profiles are suitable on both indoor and outdoor floor coverings and can bear medium to high mechanical solicitations. The material has a high tolerance and endurance to chemicals. Stainless steel ensures excellent resistance to corrosion, so it is ideal in the food, chemical, hospital and high transit areas. Some of the profiles are also available in V4A (see catalog), these are even more resistant towards aggressive chemicals.

STORAGE AND TRANSPORT

The profiles must be protected against external and environmental threats.

DISPOSAL

The profiles can be delivered to authorized steel recycling centers.

SPECIAL NOTE

Warranty and disclaimer

The application examples and tips shown in this data sheet and on our website are guidelines based on conventional crafting techniques. All information, including product-related information is standard. The author excludes any warranty for the information given in the data sheet and on the website. For the usability of products for specific purposes and for the occurrence of damage or the occurrence of defects by the information or tips given here, no warranty is also accepted. Errors, misprints and technical changes - as far as they serve the progress - reserved. Photos and illustrations are not binding. No liability for printing and image defects. Imitation and reprinting, even in part, is not permitted.

As of: 0823