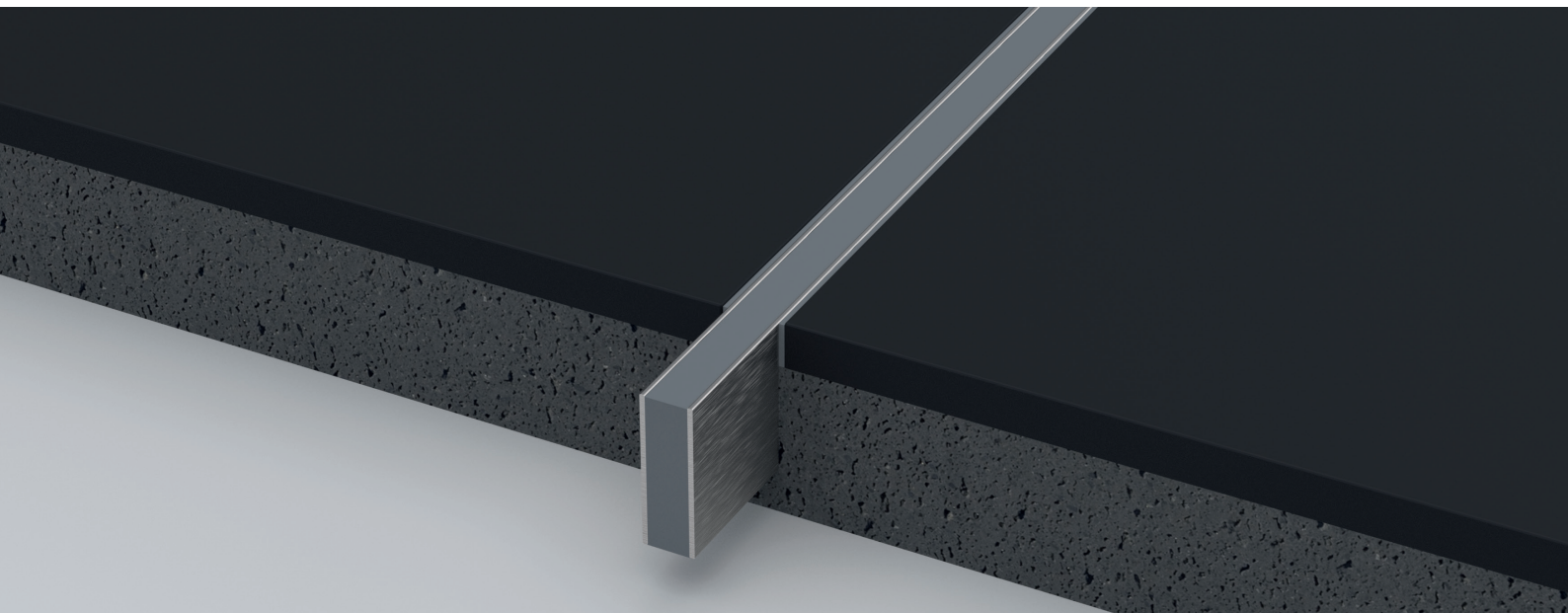


alferflex

EXPANSION JOINT PROFILE
MADE OF STAINLESS STEEL

alferpro®



Application expansion joint profile

alferflex – The expansion joint profiles were designed for thin-bed laying with very high mechanical loads and provide lasting protection against stress cracking.

DISCREET APPEARANCE DESPITE STRONG EFFECT. LAMINATE EXPANSION JOINTS WITH ALFERPRO PROFILES.

Expansion joints are for compensating floor tensions in large areas, especially in public or commercial spaces and alferflex is a functional solution which prevents cracks in the flooring. In order to keep the continuous appearance of a surface with as little disturbance as possible, we have designed very slim expansion joint profiles. Installation is possible in thin bed possible.

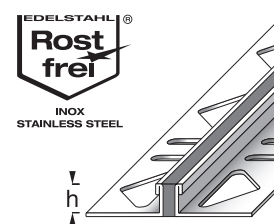
TECHNICAL SPECIFICATIONS

Stainless steel V2A 1.4301 / X5CrNi18-10

Insert: ethylene-propylene-diene (monomer) rubber
Abbreviation: EPDM

All measures, weights and loads as indicated in this data sheet are approximate figures. We can not assume liability for any special applications as well as damage resulting from improper assembly or use, a corresponding suitability test must always be carried out by the customer.

STAINLESS STEEL V2A



INSTALLATION

Choose the expansion joint profile size according to the thickness of the tile. Apply with a suitable notched trowel the tile adhesive to area to be tiled. Cover the perforated flange of the trim with tile adhesive, press the tile firmly into the adhesive bed and align it correctly.

DELIVERY FORM

The profiles are available in heights:
3; 4,5; 6; 8; 10; 11; 12,5; 15; 16,5; 17,5; 18,5;
20; 22; 25; 30mm
depending on the surface (see catalog).

The profiles are available in lengths:
250cm
depending on the surface (see catalog).

Joint width: 10mm

SURFACES

Brushed

PACKING UNIT

PU 1 = 10 pcs, PU 2 = 50 pcs, PU 3 = 150 pcs

PROCESSING, CARE, CLEANING

The following points must be observed in order to prevent damage on the profiles surfaces:

- The processing instructions of us and the tile adhesive must always be observed.
- Any excess of grout, mortar and tile adhesive on the profile surface should be removed immediately with water.
- Allow to dry out thoroughly, ensuring the area is well ventilated.
- Cover the covering with a protective foil or similar only after the mortar has completely set.
- The profiles are cleaned with a damp cloth and pH-neutral cleaning agents. Stubborn dirt on the profiles can also be removed with solvents. Please do not use aggressive cleaning agents for the silicone joint.
- To cut the profiles to length, we recommend a low-speed angle grinder with a special cutting disc for stainless steel.

MATERIAL PROPERTIES

Stainless steel expansion joint profiles are suitable on both indoor and outdoor areas and can bear medium to high mechanical solicitations. The material has a high tolerance and endurance to chemicals. Stainless steel ensures excellent resistance to corrosion, so it is ideal in the food, chemical, hospital and high transit areas. The EPDM insert is partially resistant to chemicals.

STORAGE AND TRANSPORT

The profiles must be protected against external and environmental threats.

DISPOSAL

The profiles can be delivered to authorized steel recycling centers.

SPECIAL NOTE

Warranty and disclaimer

The application examples and tips shown in this data sheet and on our website are guidelines based on conventional crafting techniques. All information, including product-related information is standard. The author excludes any warranty for the information given in the data sheet and on the website. For the usability of products for specific purposes and for the occurrence of damage or the occurrence of defects by the information or tips given here, no warranty is also accepted. Errors, misprints and technical changes - as far as they serve the progress - reserved. Photos and illustrations are not binding. No liability for printing and image defects. Imitation and reprinting, even in part, is not permitted.

As of: 08/2023