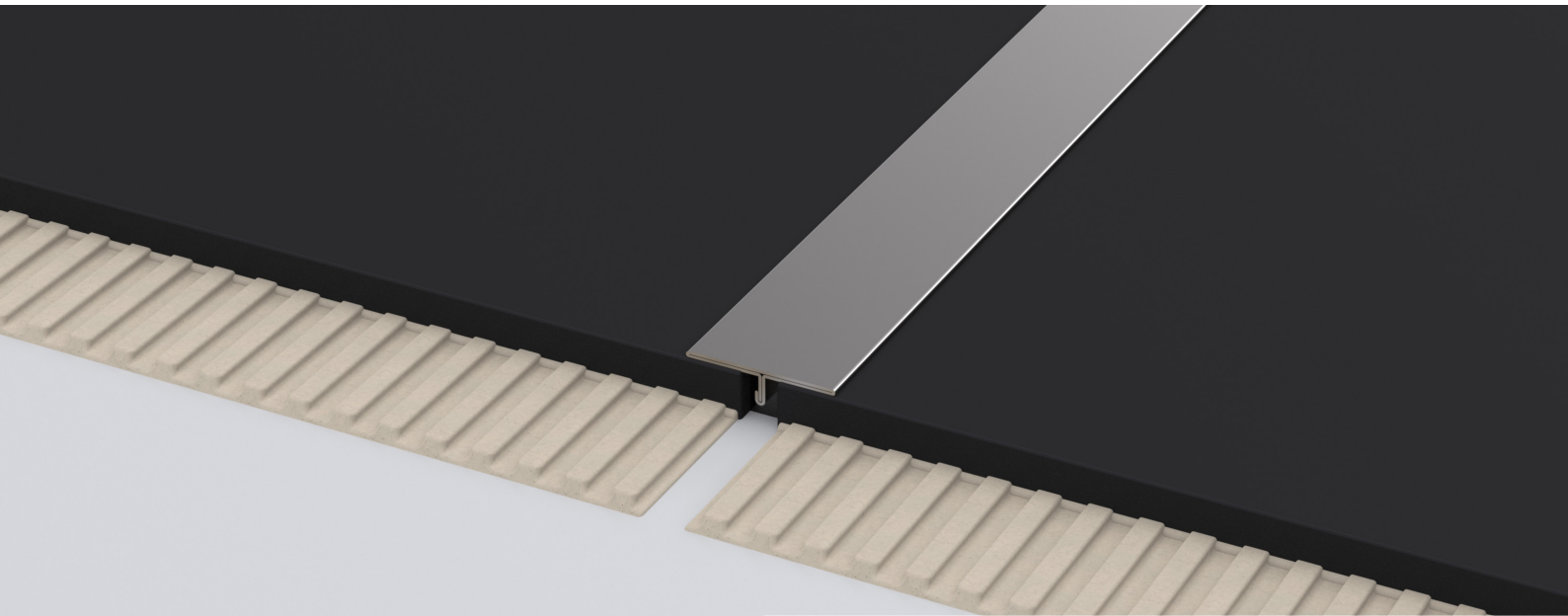


alfercap

T-PROFILE MADE OF STAINLESS STEEL

alferpro®



Application T-profile

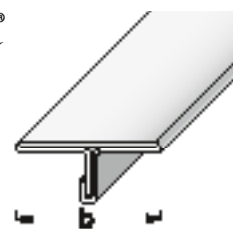
alfercap – This profile elegantly conceals transitions of adjoining floor coverings. For installation, the T-profiles are simply pushed into the fresh silicone.

THE SMART COVERING FOR EXPANSION JOINTS AND TRANSITIONS BETWEEN VARIOUS FLOOR SURFACES.

Ceramic tiles are unimaginable without joints. However, they often interfere with the appearance. The alfercap profiles are pressed into the still wet silicone bed and they deftly conceal the transitions between the floor surfaces. Available in many trendy colours and high quality materials, they are designer items. The profiles can also be added subsequently. An elegant solution for covering thicknesses from 6 mm.

GLOSSY
BRUSHED
(240K)

STAINLESS STEEL
V2A



TECHNICAL SPECIFICATIONS

Stainless steel 1.4301 / X5CrNi18-10

All information is approximate. Since we can not assume liability for special applications, a corresponding suitability test must always be carried out by the customer.

INSTALLATION

Choose the T-profile size according to the thickness of the floor covering and cut to length. Press the profile firmly into the fresh silicone joint and align it correctly to the floor covering.

DELIVERY FORM

The profiles are available in heights:
14; 25 mm
depending on the surface (see catalog).

The profiles are available in lengths:
100; 250 cm
depending on the surface (see catalog).

SURFACES

Glossy, brushed (240K)

PACKING UNIT

PU 1 = 10 pcs, PU 2 = 50 pcs, PU 3 = 150 pcs

PROCESSING, CARE, CLEANING

The following points must be observed in order to prevent damage on the profiles surfaces:

- The processing instructions of the tile adhesive must always be observed.
- Any excess of grout, mortar and tile adhesive on the profile surface should be removed immediately with water.
- Allow to dry out thoroughly, ensuring the area is well ventilated.
- The protective film or similar, used for the installation, can only be removed after the paving has dried completely.
- The profiles are cleaned with a damp cloth and pH-neutral agents.
- To cut the profiles to length, we recommend a low-speed angle grinder with a special cutting disc for stainless steel.
-

MATERIAL PROPERTIES

Stainless steel T-profiles are suitable for medium to high mechanical loads in indoor and outdoor areas and have a high resistance to chemicals. They are often used in the food industry, in hospitals and swimming pools, etc.

STORAGE AND TRANSPORT

The profiles should be protected against external impact and abrasion.

DISPOSAL

The profiles can be supplied to steel recycling.

SPECIAL NOTE

Warranty and disclaimer

The application examples and tips shown in this data sheet and on our website are guidelines based on conventional crafting techniques. All information, including product-related information is standard. The author excludes any warranty for the information given in the data sheet and on the website. For the usability of products for specific purposes and for the occurrence of damage or the occurrence of defects by the information or tips given here, no warranty is also accepted. Errors, misprints and technical changes - as far as they serve the progress - reserved. Photos and illustrations are not binding. No liability for printing and image defects. Imitation and reprinting, even in part, is not permitted.

As of: 06/2023