

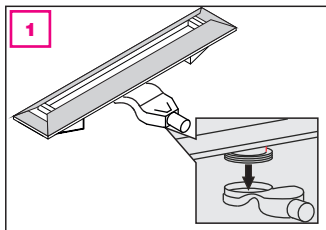
Installation instructions:

"Shower channel slim plus with EPS block ALISP EPS"

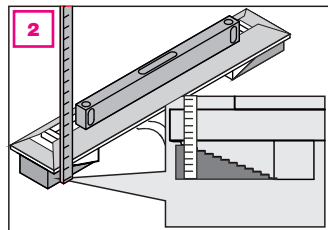
Preparation of the substrate:

The surface on which the seal is to be applied must be dry or moist, firm and sound. Also must be free of dust, dirt or separating agents. Substrates must be pretreated beforehand if necessary according to their type. There must be only limited movement of the substrate after application of the seal. After application of the seal, no cracks >0.2 mm must occur.

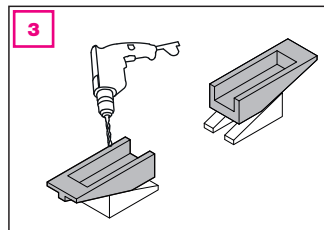
Installation:



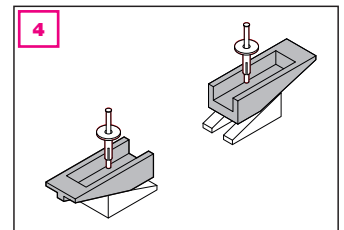
Mount the drain on the channel body.



Set the height of the channel using the EPS block. Use a spirit level for this purpose. Each step of the height adjustment corresponds to 2 mm.

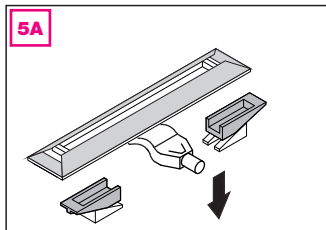


Drill hole for the height adjustment screw inside.

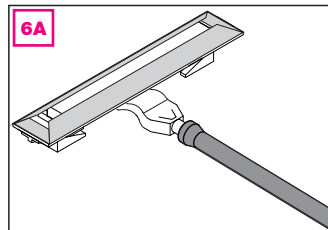


Fix the adjusted height of the EPS block with screws. Use special polystyrene dowels for this.

ASSEMBLY OF HORIZONTAL DRAINAGE

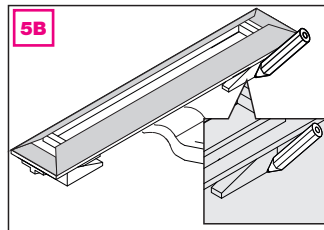


Place the channel body in the fixed EPS block.

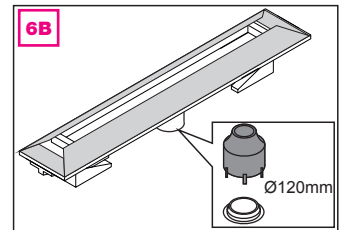


Connect the channel drain outlet with the drainage pipe. To protect the channel from dirt accumulation, place the protective polystyrene supplied with the unit in the channel body.

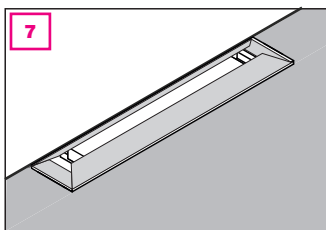
ASSEMBLY OF VERTICAL DRAINAGE



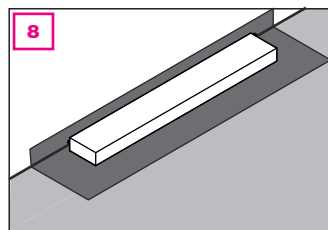
Before drilling a vertical drain hole, mark the position of the channel on the underlying surface.



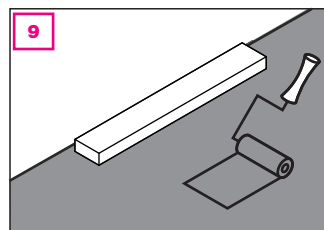
Use a drill bit with a diameter of at least 120 mm to drill the hole.



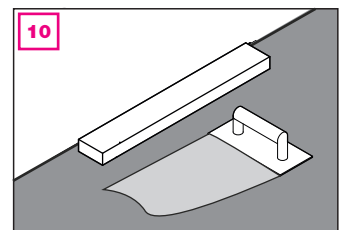
Now bring in the sloping screed with at least 2% gradient towards the shower channel.



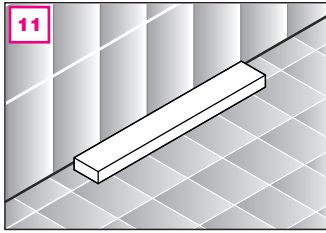
Seal the screed. For this we recommend our sealing sheet AG DB 30 from our alferground assortment. Observe the processing instructions for alferground sealing sheets.



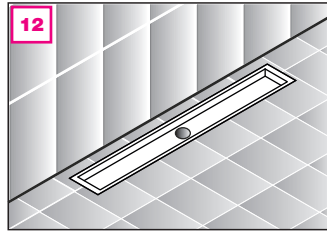
Seal the overlap of the factory-applied sealing sleeve on the channel body with sealing sheet AG DB 30 with Ottocoll M 500 or Ardex S1-K.



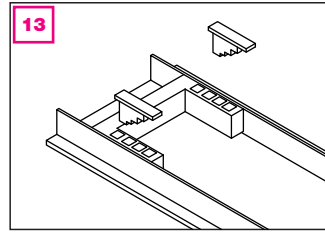
Now apply the tile adhesive and start laying the tiles.



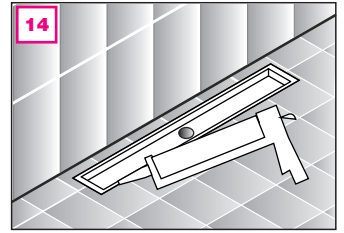
11 Remove protective polystyrene only after laying the tile covering.



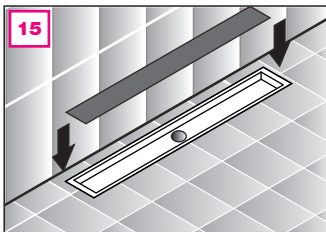
12 Now insert the stainless steel frame.



13 For height adjustment use the supplied plastic feet.

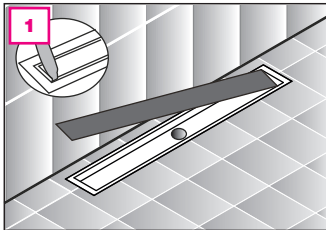


14 Close the open joint between the stainless steel frame and tile covering with silicone or grout.

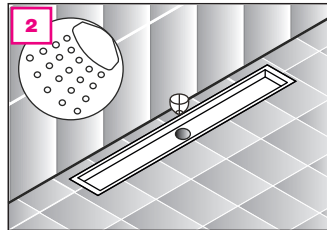


15 Now insert the design grid.

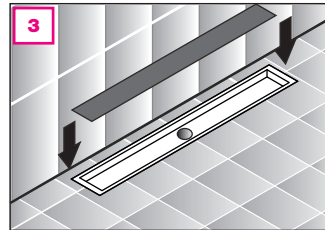
CLEANING AND CARE:



1 Regular cleaning with commercial sanitary cleaner is recommended. To do this, remove the grid using the cover key.



2 Clean the channel and hair trap.



3 Finally, replace the design grid.

Notes:

After completion of work the entire sealed area should be examined for defects or damage (for example, perforations). Leaking or dirty spots must be suitably reworked, so that sufficient sealing is ensured over the entire area.

Sealing sheets must be processed with a sharp tool and with caution. Damage to the sealing components through such tools should be avoided so that leaks do not occur.

Residual and waste material can be disposed of as residual waste, in the yellow bin or packaging waste.

It is absolutely necessary to follow the installation instructions, or else there is no entitlement to the guarantee.