



# alfercorner

## EDGE PROTECTING PROFILES

---

**Stable and clean edges for tile coverings, plastered or wallpapered walls.**

No more broken edges. The profiles of the alfercorner series protect wall edges permanently from impact damage. Ideal in highly frequented areas such as hallways and public spaces. Thanks to timeless design and many options you will find the correct product for every application: profiles for installing in the tile bed or for subsequent completion, edged single, triple and five-fold in many options of stainless steel or aluminium.



02

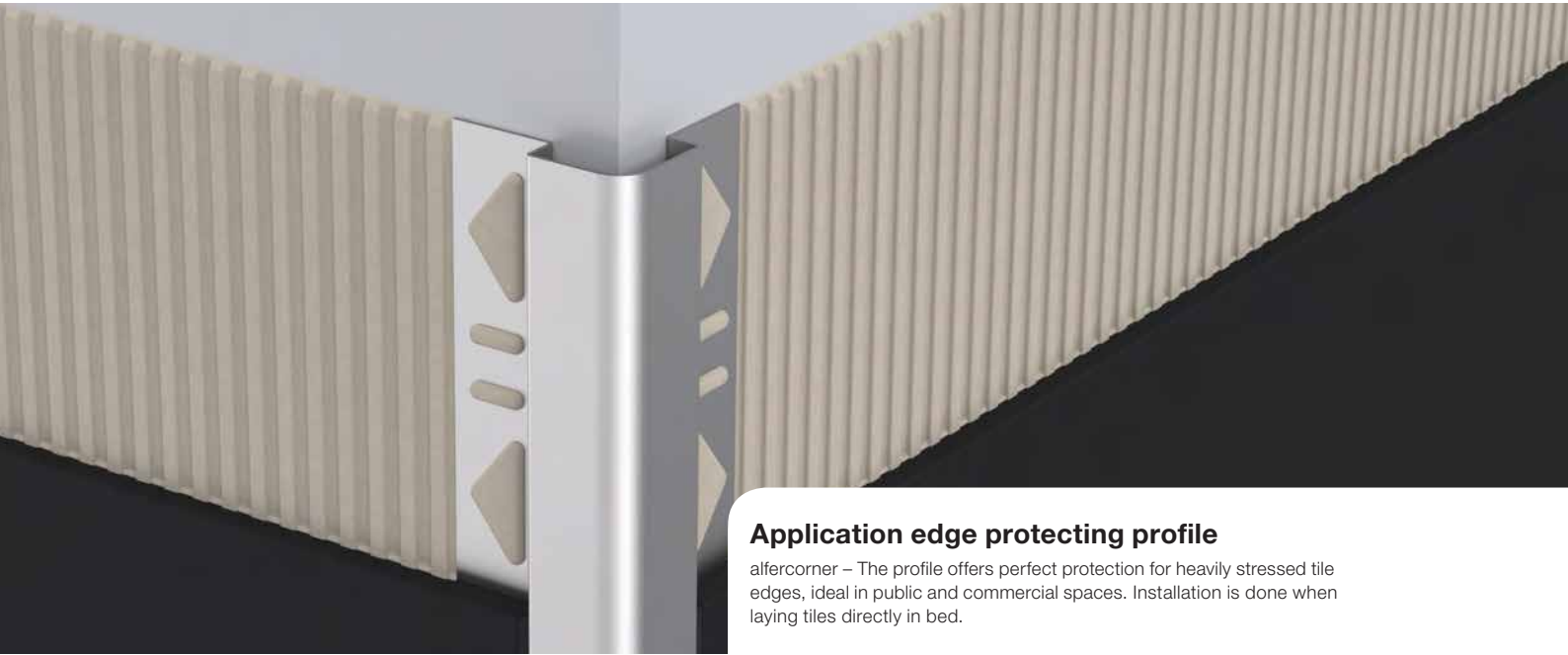
200 - 206 >





# alfercorner

## EDGE PROTECTING PROFILES

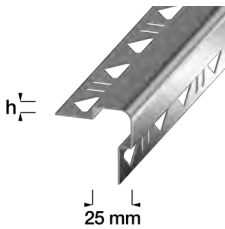


### Application edge protecting profile

alfercorner – The profile offers perfect protection for heavily stressed tile edges, ideal in public and commercial spaces. Installation is done when laying tiles directly in bed.

### STAINLESS STEEL V2A

GLOSSY



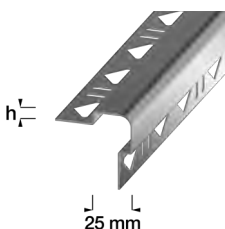
BRUSHED (240K)

### TILE EDGE PROTECTING PROFILE

PU 1 = 10 pcs., PU 2 = 50 pcs., PU 3 = 150 pcs.

Height h (mm)	Length (cm)	Reference	Price €/metre
8	300	ACO E 80	<b>35,39</b>
	200	ACO E 80	<b>35,39</b>
10	300	ACO E 100	<b>36,89</b>
	200	ACO E 100	<b>36,89</b>
8	300	ACO E 80 GB	<b>36,53</b>
	200	ACO E 80 GB	<b>36,53</b>
10	300	ACO E 100 GB	<b>38,00</b>
	200	ACO E 100 GB	<b>38,00</b>

### STAINLESS STEEL V4A



### TILE EDGE PROTECTING PROFILE

PU 1 = 10 pcs., PU 2 = 50 pcs., PU 3 = 150 pcs.

Height h (mm)	Length (cm)	Reference	Price €/metre
8	300	ACO E4 80	<b>41,40</b>
	200	ACO E4 80	<b>41,40</b>
10	300	ACO E4 100	<b>43,13</b>
	200	ACO E4 100	<b>43,13</b>

### Application edge protecting 1-fold

alfercorner – The 1-fold edged corner protection profile made of stainless steel or aluminium is subsequently glued directly on the tile covering.



### EDGE PROTECTING PROFILE 1-FOLD EDGED

PU 1 = 10 pcs., PU 2 = 50 pcs., PU 3 = 150 pcs.

Dimension <b>a</b> (mm)	Length (cm)	Reference	Price €/metre
10	300	ACO E 10-1	<b>10,75</b>
	200	ACO E 10-1	<b>10,75</b>
15	300	ACO E 15-1	<b>10,75</b>
	200	ACO E 15-1	<b>10,75</b>
20	300	ACO E 20-1	<b>12,04</b>
	200	ACO E 20-1	<b>12,04</b>
25	300	ACO E 25-1	<b>14,74</b>
	200	ACO E 25-1	<b>14,74</b>
30	300	ACO E 30-1	<b>20,57</b>
	200	ACO E 30-1	<b>20,57</b>
40	300	ACO E 40-1	<b>26,73</b>
	200	ACO E 40-1	<b>26,73</b>
50	300	ACO E 50-1	<b>32,65</b>
	200	ACO E 50-1	<b>32,65</b>

GLOSSY

**STAINLESS STEEL  
V2A**



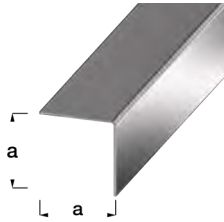


# alfercorner

## EDGE PROTECTING PROFILES

### STAINLESS STEEL V2A

### BRUSHED (240K)

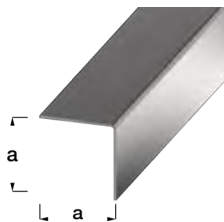


### EDGE PROTECTING PROFILE 1-FOLD EDGED

PU 1 = 10 pcs., PU 2 = 50 pcs., PU 3 = 150 pcs.

Dimension <b>a</b> (mm)	Length (cm)	Reference	Price €/metre
10	300	ACO E 10-1 GB	<b>11,89</b>
	200	ACO E 10-1 GB	<b>11,89</b>
15	300	ACO E 15-1 GB	<b>11,89</b>
	200	ACO E 15-1 GB	<b>11,89</b>
20	300	ACO E 20-1 GB	<b>13,19</b>
	200	ACO E 20-1 GB	<b>13,19</b>
25	300	ACO E 25-1 GB	<b>15,87</b>
	200	ACO E 25-1 GB	<b>15,87</b>
30	300	ACO E 30-1 GB	<b>21,71</b>
	200	ACO E 30-1 GB	<b>21,71</b>
40	300	ACO E 40-1 GB	<b>27,85</b>
	200	ACO E 40-1 GB	<b>27,85</b>
50	300	ACO E 50-1 GB	<b>33,80</b>
	200	ACO E 50-1 GB	<b>33,80</b>

### STAINLESS STEEL V4A



### EDGE PROTECTING PROFILE 1-FOLD EDGED

PU 1 = 10 pcs., PU 2 = 50 pcs., PU 3 = 150 pcs.

Dimension <b>a</b> (mm)	Length (cm)	Reference	Price €/metre
25	300	ACO E4 25-1	<b>19,15</b>
	200	ACO E4 25-1	<b>19,15</b>
30	300	ACO E4 30-1	<b>26,74</b>
	200	ACO E4 30-1	<b>26,74</b>
40	300	ACO E4 40-1	<b>34,73</b>
	200	ACO E4 40-1	<b>34,73</b>

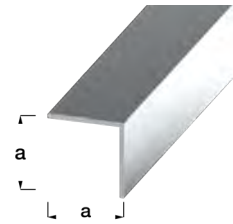
## EDGE PROTECTING PROFILE 1-FOLD EDGED

PU 1 = 10 pcs., PU 2 = 50 pcs., PU 3 = 150 pcs.

Dimension <b>a</b> (mm)	Length (cm)	Reference	Price €/metre
10	300	ACO AE 10-1	<b>3,77</b>
	200	ACO AE 10-1	<b>3,77</b>
15	300	ACO AE 15-1	<b>5,05</b>
	200	ACO AE 15-1	<b>5,05</b>
20	300	ACO AE 20-1	<b>6,30</b>
	200	ACO AE 20-1	<b>6,30</b>
25	300	ACO AE 25-1	<b>7,58</b>
	200	ACO AE 25-1	<b>7,58</b>
30	300	ACO AE 30-1	<b>10,65</b>
	200	ACO AE 30-1	<b>10,65</b>
40	300	ACO AE 40-1	<b>14,73</b>
	200	ACO AE 40-1	<b>14,73</b>

**SILVER  
ANODIZED**

**ALUMINIUM**





# alfercorner

## EDGE PROTECTING PROFILES



### Application edge protecting 3-fold

alfercorner – The 3-fold edged corner protection profile made of stainless steel is ideal for wet rooms. The profile is subsequently glued directly onto the tile covering.

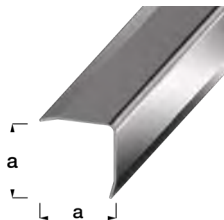
### EDGE PROTECTING PROFILE 3-FOLD EDGED

PU 1 = 10 pcs., PU 2 = 50 pcs., PU 3 = 150 pcs.

Dimension <b>a</b> (mm)	Length (cm)	Reference	Price €/metre
25	300	ACO E 25-3	<b>21,46</b>
	200	ACO E 25-3	<b>21,46</b>
30	300	ACO E 30-3	<b>27,87</b>
	200	ACO E 30-3	<b>27,87</b>
40	300	ACO E 40-3	<b>34,40</b>
	200	ACO E 40-3	<b>34,40</b>
50	300	ACO E 50-3	<b>40,93</b>
	200	ACO E 50-3	<b>40,93</b>
<hr/>			
25	300	ACO E 25-3 GB	<b>22,59</b>
	200	ACO E 25-3 GB	<b>22,59</b>
30	300	ACO E 30-3 GB	<b>29,00</b>
	200	ACO E 30-3 GB	<b>29,00</b>
40	300	ACO E 40-3 GB	<b>35,52</b>
	200	ACO E 40-3 GB	<b>35,52</b>
50	300	ACO E 50-3 GB	<b>42,07</b>
	200	ACO E 50-3 GB	<b>42,07</b>

### STAINLESS STEEL V2A

### GLOSSY



### BRUSHED (240K)

## EDGE PROTECTING PROFILE 3-FOLD EDGED

PU 1 = 10 pcs., PU 2 = 50 pcs., PU 3 = 150 pcs.

Dimension <b>a</b> (mm)	Length (cm)	Reference	Price <b>€/metre</b>
25	300	ACO E4 25-3	<b>27,89</b>
	200	ACO E4 25-3	<b>27,89</b>
30	300	ACO E4 30-3	<b>36,23</b>
	200	ACO E4 30-3	<b>36,23</b>
40	300	ACO E4 40-3	<b>44,73</b>
	200	ACO E4 40-3	<b>44,73</b>

## STAINLESS STEEL V4A

