

alferpro[®]

COLOURS AND SURFACES



Surface and colour competence in perfection

Whether stainless steel, aluminium, brass or plastic – our profiles are available in all kinds of materials and surfaces. From glossy to brushed to check pattern, from metallic grey to high-gloss red to concrete – our colour selection also leaves nothing to be desired.

With our wide-ranging colour palette for our extensive product range, we cater to all trends and designs. The additional anodised colours in different degrees of gloss complete our range and open up endless possibilities.

The powder coatings score especially with the stone and earth tones. They not only look good, but also feel great due to the textured surface.

You're spoiled for choice – what will you choose?





Stainless steel

High quality and robust

- Suitable for indoor and outdoor use; even with high stress levels
- Depending on the alloy, stainless steel profiles have a high resistance to chemicals
- Caution: The cut edges are not rust-resistant
- Rust film depending on environmental conditions (salt water, industrial fumes, chlorine, aggressive cleaning agents)
- Application, for example, in swimming pools, food industry, etc.
- Cleaning recommendations: Normal household cleaners

STAINLESS STEEL V4A



STAINLESS STEEL V2A



GLOSSY



POLISHED



BRUSHED
(240K)



CHECK
PATTERN



SATIN-
FINISHED

STAINLESS STEEL V2A

SILVER GREY
METALLIC



BLACK
MATT



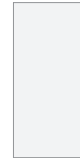
Aluminium

Diverse Surfaces

- Suitable for indoor and outdoor use with medium mechanical stress levels
- Staining by oxidation possible: Protect material against contact with adhesive and grout residues
- If the material comes into contact with processing products, clean it immediately with a cloth and clean water
- Deformation of the profile may cause changes in colour at the edges
- The anodised layer is sensitive to scratches; damage can be repaired with paint
- The powder coating protects the material, giving each profile a matching appearance and enables diverse colouring
- Cleaning recommendation: PH-neutral detergent without abrasive particles – Please do not use alkaline cleaning agents!

ALUMINIUM

NATURAL



Anodised colours

Selected range

Curtain up for strong colours and finishes! The colour palette is broad, ranging from cool tones like silver and titanium to warm golden tones and copper, the trend colour. In addition to matching the profile colour to your tile, you can choose between different finishes. Whether matt or glossy, whether classically brushed or in an elegant cross cut: Our anodised shades are the perfect choice for timeless, beautiful living.

ALUMINIUM		ALUMINIUM	
	SILVER MATT CROSS BRUSHED		COPPER HIGH GLOSS HIGH GLOSS BRUSHED CROSS BRUSHED
	CHROME HIGH GLOSS HIGH GLOSS BRUSHED		RED HIGH GLOSS CROSS BRUSHED
	ICE HIGH GLOSS HIGH GLOSS BRUSHED CROSS BRUSHED		GREY HIGH GLOSS HIGH GLOSS BRUSHED CROSS BRUSHED
	TITANIUM MATT HIGH GLOSS HIGH GLOSS BRUSHED CROSS BRUSHED		BRONZE MATT
	CHAMPAGNE MATT CROSS BRUSHED		BLACK MATT BRUSHED CROSS BRUSHED
	GOLD MATT HIGH GLOSS HIGH GLOSS BRUSHED CROSS BRUSHED		

Powder coated

Bring colour into life with powder coatings

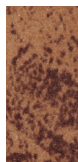
Powder coating offers extra protection against corrosion and scratches and also enhances the appearance of the profiles. The wide range of colors that powder coating brings with it, enables a variety of design options for every conceivable project. And the best thing about it: The profiles remain mechanically resilient and weather-resistant.



ALUMINIUM



CONCRETE



COPPER
RUST



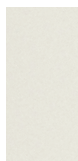
COPPER
ANTIQUÉ

Sublimated surfaces

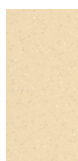
Unique treatment process

Our unique coating process withstands all traffic loads. The colours are burned into the aluminium and are therefore extremely durable. The textured surfaces give the profile depth and simple elegance. Discover new design possibilities with our high-quality square and Listelli profiles.

ALUMINIUM



DOLOMITE



SAND



QUARTZ



FLINT



BASALT

Stone colours

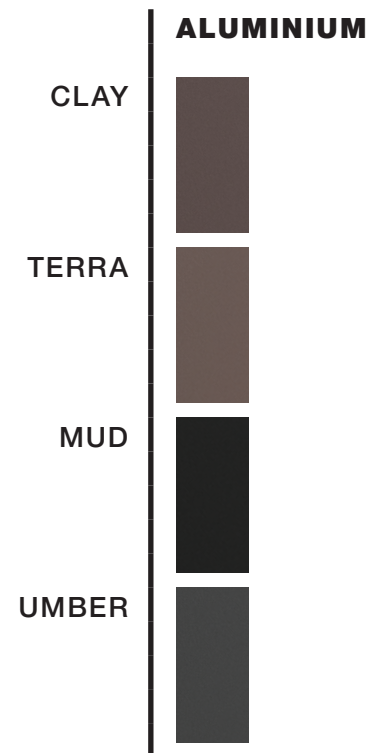
Natural elegance

Stone shades captivate with cool elegance. The textured and slightly shimmering finishes lend depth to the profile. Discover new design options with our high quality square profiles.

Earth colours

Warm cosiness

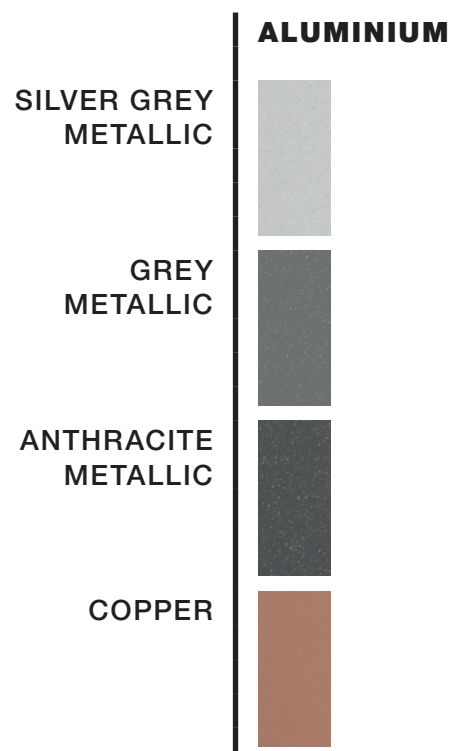
Our new earth tones are particularly suitable for tile coverings in warm colours. All four earth tones captivate with their textured and partly sparkling finishes. They feel good, look good and pass each test in everyday life. Due to the colour choices, the profiles adapt well to the various tile and natural stone coverings.



Metal colours

Industrial Look

Industrial and vintage designs are the in-thing in the field of wall and floor coverings. We will help you find the right profile for both: With the subtle shades of silver grey, grey and anthracite, you have the perfect companion for the trendy and cool loft and industrial look. Our copper tones complete the vintage look of your room. From tranquil to extremely lively colour selection: The choice is yours.



Plastic

Brilliant surfaces

- Suitable for indoor areas with low mechanical stress levels
- Through-coloured material
- Cleaning recommendation: Apply conventional household cleaner on soft cloth and wipe surfaces



Brass

Natural

- Suitable in indoor and outdoor areas with all types of mechanical stress levels
- The material becomes darker with exposure and time
- In humid conditions, the material can form a patina, which can be removed by polishing
- Cleaning recommendation: Apply conventional household cleaning agents (washing liquid, citric acid) on soft cloth, polish and rinse with clean water – do not use abrasive products

NATURAL

BRASS



Chromium-plated

- Suitable in indoor areas with medium mechanical stress levels
- Discolouration possible: Protect material from contact with adhesive and grout residues
- Upon contact with processing products, clean the material immediately with a cloth and clean water
- Cleaning recommendation: Citric acid or other compatible cleaner

CHROMIUM-
PLATED

BRASS



alferpro®

COLOUR OVERVIEW

STAINLESS STEEL

STAINLESS STEEL V2A AND V4A

Colour	glossy	polished	brushed (240K)	check pattern	gatt finish	glitter finish	matt
Stainless steel V2A	x	x	x	x			
Silver grey metallic						x	
Satin-finished							x
Black matt					x		
Stainless steel V4A	x						

ALUMINIUM

ANODISED COLOUR

Colour	glossy	high gloss	high gloss brushed	matt	matt brushed	cross brushed
Natural	x					
Silver				x		x
Chrome		x	x			
Ice		x	x			x
Titanium		x	x	x		x
Champagne				x		x
Gold		x	x			x
Copper		x	x			x
Red		x				x
Grey		x	x			x
Black				x	x	x

STONE COLOUR

Colour	matt finish	glitter finish
Dolomite	x	
Sand		x
Quartz		x
Flint	x	
Basalt	x	

EARTH COLOUR

Colour	matt finish	glitter finish
Clay	x	
Terra	x	
Mud	x	
Umber	x	

ALUMINIUM

METAL COLOUR

Colour	gatt finish	glitter finish
Silver grey metallic		x
Grey metallic		x
Anthracite metallic		x
Copper	x	

SUBLIMATED SURFACES

Colour	matt finish	glitter finish
Concrete	x	
Copper rust	x	
Copper antique	x	

SUBLIMATED SURFACES

Colour	glossy	glitter finish	matt
White	x		x
Jasmine/Pergamon	x		
Beige	x		
Manhattan	x		
Mud brown	x		
Grey brown	x		
Black	x		x
Silver metallic	x	x	
Graphite metallic		x	

PLASTIC

Colour	glossy	matt
White	x	x
Jasmine/Pergamon	x	x
Beige		x
Manhattan	x	x
Concrete grey		x
Taupe		x
Black	x	x

BRASS

Colour	glossy	matt
Natural	x	
Chromium-plated	x	

Before installing the profile, the material and surface finish should be tested for compatibility in order to prevent permanent staining and damage to the surface

STAINLESS STEEL V2A	GLOSSY	<ul style="list-style-type: none"> • Suitable for indoor and outdoor use with medium to high stress levels • Depending on the alloy, stainless steel profiles have a high resistance to chemicals • Caution: The cut edges are not rust-resistant • Rust film depending on environmental conditions (salt water, industrial fumes, chlorine, aggressive cleaning agents) • Application, for example, in sanitary facilities, food industry, etc. • Cleaning recommendations: Normal household cleaners
STAINLESS STEEL V4A		<ul style="list-style-type: none"> • Suitable for indoor and outdoor use with medium to high stress levels • Stainless steel V4A has increased resistance against chemicals • Application, for example, in swimming pools, in the food industry, etc. • Caution: The cut edges are not rust-resistant • Cleaning recommendations: Normal household cleaners
ALUMINIUM	NATURAL	<ul style="list-style-type: none"> • Indoor use with low mechanical stress levels • Staining by oxidation possible: Protect material against contact with adhesive and grout residues • If the material comes into contact with processing products, clean it immediately with a cloth and clean water • Cleaning recommendation: Please do not use alkaline detergents!
	ANODIZED	<ul style="list-style-type: none"> • Suitable for indoor and outdoor use with low to medium mechanical stress levels • Deformation of the profile may cause changes in colour at the edges • The anodised layer is sensitive to scratches; damage can be repaired with paint • Discolouration by oxidation possible: Protect material against contact with adhesive and grout residues • Upon contact with processing products, clean the material immediately with a cloth and clean water • Cleaning recommendation: PH-neutral detergent without abrasive particles. Please do not use alkaline cleaning agents!!
	POWDER-COATED	<ul style="list-style-type: none"> • Suitable for indoor and outdoor use with low to medium mechanical stress levels • The powder coating protects the material, giving each profile a matching appearance and enables diverse colouring

BRASS | **NATURAL**

- Suitable in indoor and outdoor areas for all types of mechanical stress levels
- The material becomes darker with exposure and time
- In humid conditions, the material can form a patina, which can however be removed by polishing.
- Cleaning recommendation: Apply conventional household cleaning agents (washing liquid, citric acid) onto soft cloth, polish and rinse with clean water; do not use abrasive products

CHROMIUM-PLATED

- In indoor area for medium mechanical stress levels
- Discoloration possible: Protect material from contact with adhesive and grout residues
- Upon contact with processing products, clean the material immediately with a cloth and clean water
- Cleaning recommendation: Citric acid or other compatible cleaner

PLASTIC

- In indoor areas for low mechanical stress levels
- Through-coloured material
- Cleaning recommendation: Apply commercial household cleaner on soft cloth and wipe surfaces



Industriestrasse 7 · 79793 Wutoeschingen · Germany
T +49 7746 / 92 01 50 0 · F +49 7746 / 92 01 85 00
f @ alferpro · info.eng@alferpro.com · www.alferpro.com

