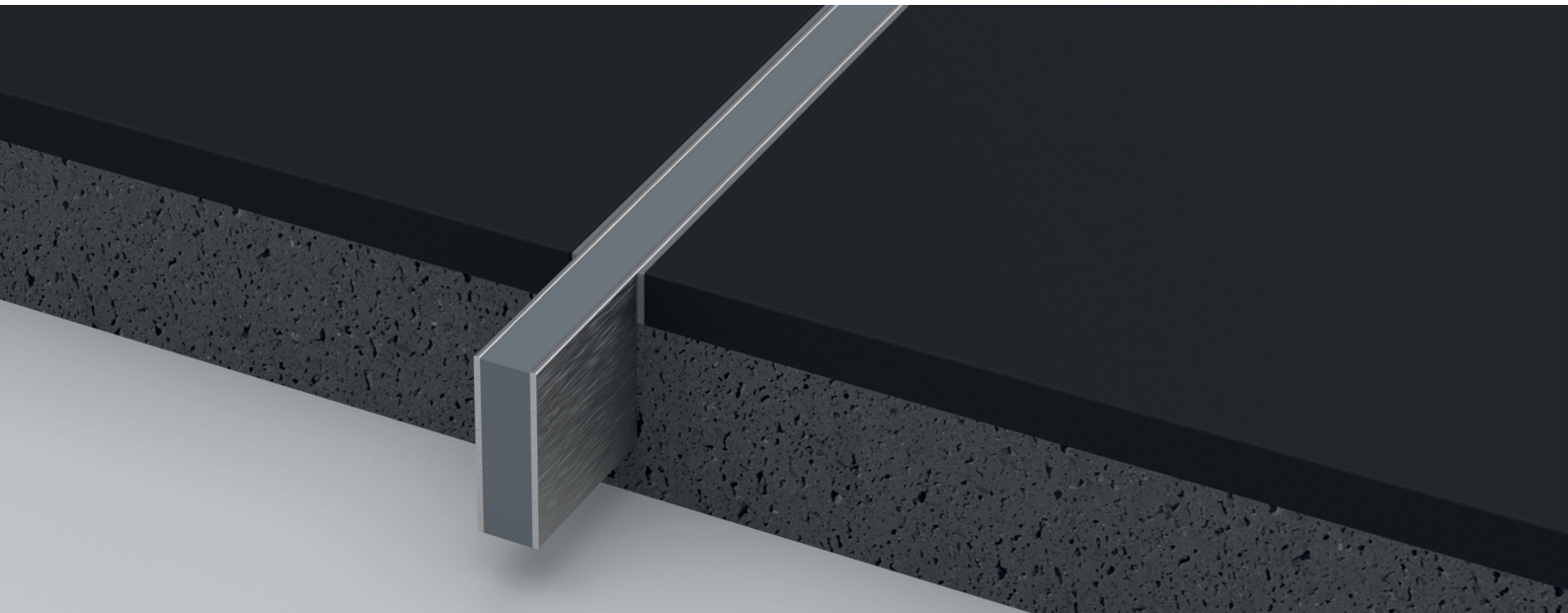


alferflex

EXPANSION JOINT PROFILE
THICK BED MADE OF STAINLESS STEEL

alferpro®



Application expansion joint profile

alferflex – The expansion joint profiles were designed for laying with very high mechanical loads and provide lasting protection against stress cracking.

DISCREET APPEARANCE DESPITE STRONG EFFECT. LAMINATE EXPANSION JOINTS WITH ALFERPRO PROFILES.

Expansion joints are for compensating floor tensions in large areas, especially in public or commercial spaces and alferflex is a functional solution which prevents cracks in the flooring. In order to keep the continuous appearance of a surface with as little disturbance as possible, we have designed very slim expansion joint profiles. Laying is possible in thick bed possible.

TECHNICAL SPECIFICATIONS

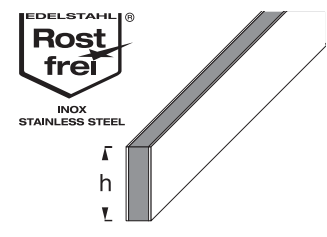
Stainless steel V2A 1.4301 / X5CrNi18-10

Insert: ethylene-propylene-diene (monomer) rubber
Abbreviation: EPDM

All measures, weights and loads as indicated in this data sheet are approximate figures. We can not assume liability for any special applications as well as damage resulting from improper assembly or use, a corresponding suitability test must always be carried out by the customer.

BRUSHED

STAINLESS STEEL
V2A



INSTALLATION

The height of the expansion joint profile must be selected so that the complete construction height of the screed and tiling is bridged. Install and align the profile in the course of laying the screed.

Install the tile so that the upper edge of the profile is flush with the covering.

Then fill the joint between the profile and the tile completely with grout.

EXPANSION JOINT PROFILE THICK BED MADE OF STAINLESS STEEL

DELIVERY FORM

The profiles are available in heights:
20; 30; 40; 50; 70; 80mm
depending on the surface (see catalog).

The profiles are available in lengths:
250 cm
depending on the surface (see catalog).

Joint width: 10mm

SURFACES

Brushed

PACKING UNIT

PU 1 = 10 pcs, PU 2 = 50 pcs, PU 3 = 150 pcs

PROCESSING, CARE, CLEANING

The following points must be observed in order to prevent damage on the profiles surfaces:

- The processing instructions of us and the tile adhesive must always be observed.
- Any excess of grout, mortar and tile adhesive on the profile surface should be removed immediately with water.
- Allow to dry out thoroughly, ensuring the area is well ventilated.
- Cover the covering with a protective foil or similar only after the mortar has completely set.
- The profiles are cleaned with a damp cloth and pH-neutral cleaning agents. Stubborn dirt on the profiles can also be removed with solvents. Please do not use aggressive cleaning agents for the silicone joint.

MATERIAL PROPERTIES

Stainless steel expansion joint profiles are suitable on both indoor and outdoor areas and can bear medium to high mechanical solicitations. The material has a high tolerance and endurance to chemicals. Stainless steel ensures excellent resistance to corrosion, so it is ideal in the food, chemical, hospital and high transit areas. The EPDM insert is partially resistant to chemicals.

STORAGE AND TRANSPORT

The profiles must be protected against external and environmental threats.

DISPOSAL

The profiles can be delivered to authorized steel recycling centers.

SPECIAL NOTE

Warranty and disclaimer

The application examples and tips shown in this data sheet and on our website are guidelines based on conventional crafting techniques. All information, including product-related information is standard. The author excludes any warranty for the information given in the data sheet and on the website. For the usability of products for specific purposes and for the occurrence of damage or the occurrence of defects by the information or tips given here, no warranty is also accepted. Errors, misprints and technical changes - as far as they serve the progress - reserved. Photos and illustrations are not binding. No liability for printing and image defects. Imitation and reprinting, even in part, is not permitted.

As of: 08/2023