

alferstyle

CORNER SHELVES

MADE OF STAINLESS STEEL

alferpro®



alferstyle – corner shelf

Every modern shower cubicle needs an alferstyle corner shelf. These not only provide a practical place to store shower gel and shampoo, but also make your bathroom really shine.

HOW ABOUT A LITTLE MORE STYLE?

The alferstyle stainless steel corner shelves are rustproof and are not only suitable for storing shower gel and soap, but are also a real eye-catcher. Whether it's the shampoo in the shower, the salt shaker in the kitchen or the soap next to the washbasin in the garage. Choose for yourself.

PRODUCT FEATURES

- 3 different geometries
- 3 different designs
- 2 colour variants
- Two material flags on each side for stable anchoring in the tile joint
- Can be installed in the course of tile laying and in already grouted, existing coverings
- Raw material made of rust-resistant V2A stainless steel

All specifications are approximate. As we cannot accept any liability for special applications, a corresponding suitability test must always be carried out by the customer.

TECHNICAL SPECIFICATIONS

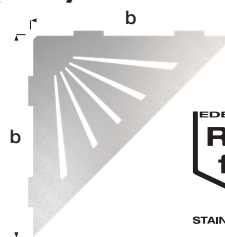
Stainless steel V2A 1.4201/x5CrNi18-10
Dimension b = 200mm
Thickness = 2mm

SURFACES

Brushed stainless steel | black powder-coated matt

BRUSHED (240K) | STAINLESS STEEL (V2A)

BLACK POWDER-COATED MATT

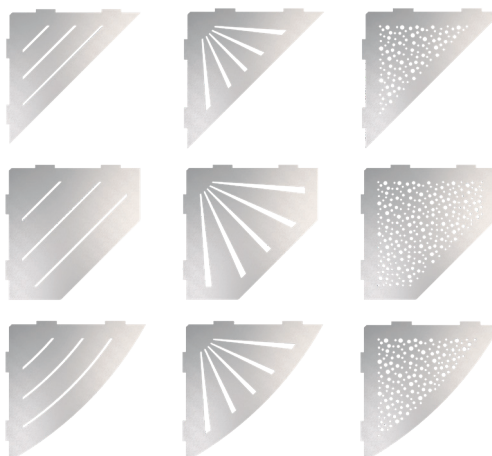


Example image

MATERIAL PROPERTIES

The stainless steel shelf is suitable for medium mechanical loads indoors and outdoors and is highly resistant to a wide range of chemicals.

SHAPES AND DESIGN



CARE AND CLEANING

To avoid damage to the surface, the following points must be observed:

- We recommend using hydrochloric acid and chloride-free cleaning agents.
- Do not use metal objects for cleaning.
- Clean daily with commercially available soapy water.
- If chloride deposits are not carefully removed, this will inevitably lead to rust formation after a certain time.
- The corner shelves can be cleaned with commercially available sanitary cleaners.

In connection with cleaning, the choice of a suitable surface finish for the stainless steel products also plays a decisive role!

PACKING UNIT

PU 1= 1 piece; PU 2=5 pieces

STORAGE AND TRANSPORT

The sealing sheet should be protected against external impact and abrasion.

DISPOSAL

The sealing sheet can be supplied to plastic recycling.

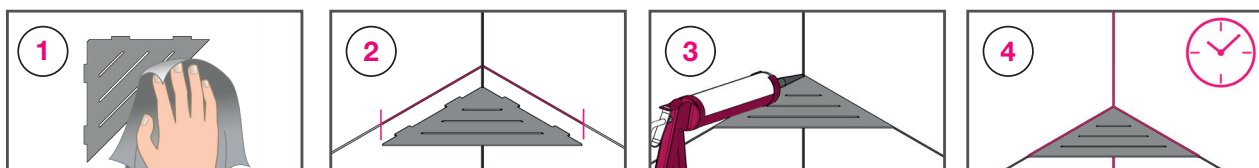
I N S T A L L A T I O N

Corner support - installation in an existing or jointless tile covering

1. The uncoated corner shelf is coated with a light film of oil at the factory for production reasons. The shelf must therefore be cleaned with a soft cloth and a little acetone before installation.
2. **Corner shelf - installation during tiling**
After the tiles have been laid and the tile adhesive has hardened, the corner shelf must be positioned and its position marked on the tiling. We recommend removing the corner support to protect it from soiling after labelling and before applying the covering grout. before grouting. The marked area must be left out when grouting.

Mark the position of the lateral material lugs of the corner support on the tiling. Remove any existing grouting in the marked area. For jointless coverings: cut open the covering in the area of the marking. Caution: Any existing sealing layer behind the covering must not be damaged.

3. Insert the corner support with its lateral material lugs into the ungrouted area, align it and apply a silicone joint on all sides. In the case of installation during tiling, silicone may only be applied after the covering joints have dried.
4. The curing time of the silicone must be observed before using the corner support.



SPECIAL NOTE

Warranty and disclaimer

The application examples and tips shown in this data sheet and on our website are guidelines based on conventional crafting techniques. All information, including product-related information is standard. The author excludes any warranty for the information given in the data sheet and on the website. For the usability of products for specific purposes and for the occurrence of damage or the occurrence of defects by the information or tips given here, no warranty is also accepted. Errors, misprints and technical changes - as far as they serve the progress - reserved. Photos and illustrations are not binding. No liability for printing and image defects. Imitation and reprinting, even in part, is not permitted.

As of: 12/2023